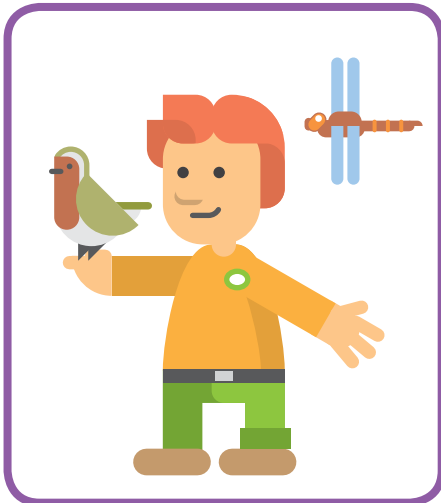
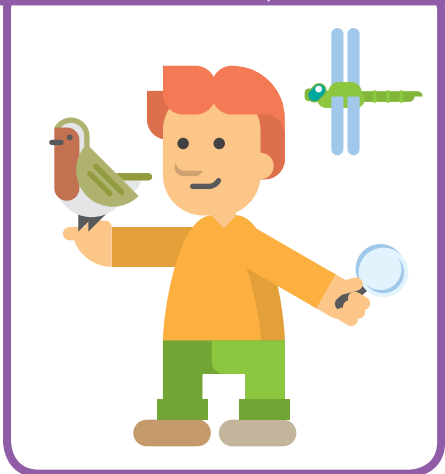


Spot the different

There are 10 differences, can you spot all of them? You will score half a point for each one.

Challenge 04:
YOUR POINT pt / 5 pt



Answers: 1. Dragonfly 2. Rik's hair 3. Rik's ear 4. Robin's wing 5. Shirt collar 6. Shirt badge 7. Magnifying glass 8. Belt 9. Trousers leg 10. Shoes colour

Visit us



P Goldenstones Car Park
BA20 1QZ

Further information

Follow us on social media for up to date information and photos:



If you would like more information about the country park, Ninesprings Café, our events & activities, the volunteers or Friends group please contact us:

W: southsomersetcountryside.com
T: 01935 462462 **A:** South Somerset District Council, Council Offices, Brympton Way, Yeovil, Somerset, BA20 2HT
A: Ninesprings Café, Brunswick Street, Yeovil, Somerset, BA20 1QZ



ROCKETBOX Made by rocketbox.co.uk

Yeovil Country Park



Nature Trail Activities Ranger Rik's Adventure



Ranger Name: **YOUR Name**
 Total point: (Challenge 01+02+03+04)
YOUR POINT pt / 35 pt

Join Ranger Rik on his adventure and see what you can score completing his challenges!

- 30** points or above: **RARE Bullfinch**
- 25** points or above: **UNCOMMON Woodpecker**
- 20** points or above: **COMMON Robin**





Rik's Nature Quiz

How well do you know about Yeovil Country Park? Take Rik's quiz and see what you score!

Challenge 01:

YOUR POINT pt / 17 pt

Q. 1 **Name this bird**

Can you name a bird with red all over its breast?

pt

1 pt




Q. 2 **Name the insect**

What large insects might you see flying above the lake in the summer?

pt

1 pt



Q. 3 **Name this fluffy beast**

What is small and grey with a fluffy tail that lives in the trees?

pt

1 pt



Q. 4 **Name a minibeast**

Can you name a minibeast that you might find living under a log?

pt

1 pt

Q. 5 **Name of a baby swan**

What is the correct name for a 'baby swan'?

pt


1 pt

Q. 6 **Name 5 different trees**

Can you name 5 different trees you would find in Ninesprings?

pt

5 pt



a _____

b _____

c _____

d _____

e _____

Q. 7 **Name that tree**

Which tree in Ninesprings might be particularly Christmassy with its red berries in winter?

pt


1 pt

Q. 8 **Name of a female fox**

Do you know what a female fox is called?

pt

1 pt




Q. 9 **Name a yellow flower**

Can you name a yellow flower that you would see in Ninesprings?

pt

1 pt



Q. 10 **Name 4 wild mammals**

Can you name 4 wild mammals that you will find in these different habitats at Ninesprings?

pt

4 pt

a _____ b _____

River Meadows

c _____ d _____

Woodland Hedgerow



1 miles / 1.6 km

Nature Trail Activity

Can you follow the directions on the map and answer all Rik's questions?



START

O1

Tree with pale coloured bark

What is the name of the tree on the bank to your left with the pale coloured bark?



1 pt

Start at Ninesprings Cafe (opposite Goldenstones). Follow the directions on the map to explore Ninesprings and answer questions on the way round. At each stopping point look for the Ranger Rik disc to show you are in the right location to answer the question. Please note that there are some steps on the route.

O4

Main track into woodland

Badgers live on this woodland bank. What is the name of their home?



1 pt

O3

Bench at top of tarmac path

How many different noises can you hear and what makes them?



1 pt

O2

Large tree on main tarmac path

Can you find the nuts and leaves from this tree? Do they give you a clue to its name?



1 pt

1 pt

Bonus point if you can find evidence of things living in this tree. 1 pt

O5

Log storage area at the path junction

Look at the large tree on the bank – what is the name of the nuts that grow on this tree?



1 pt

O6

Large conifer

Look up into the tree. What animal lives in a man made home like this?



1 pt

O7

Waterfalls along the valley

How many waterfalls can you count on your way to the lake?



1 pt

O10

Mallard ducks in the lake

Can you name two main differences between male and female mallard ducks?



1 pt

O9

The hollow tree

What is the name of the hollow tree?



1 pt

O8

Small humpback bridge

Which striking bird might you see flying across the pond?



1 pt

Clue: It catches fish to eat!

Clue: it's a type of citrus fruit



Brunswick Street

START

END (10)

01

02

03

04

05

06

08

07

Challenge 02:
YOUR POINT pt / 2 pt

Where is...

Can you find where these appear in the park on the map above?



Well done!

You have completed the Trail!
You can always head back to the Ninespring cafe to have a drink and re-charge for the next challenge.

Challenge 03:
YOUR POINT pt / 11 pt

